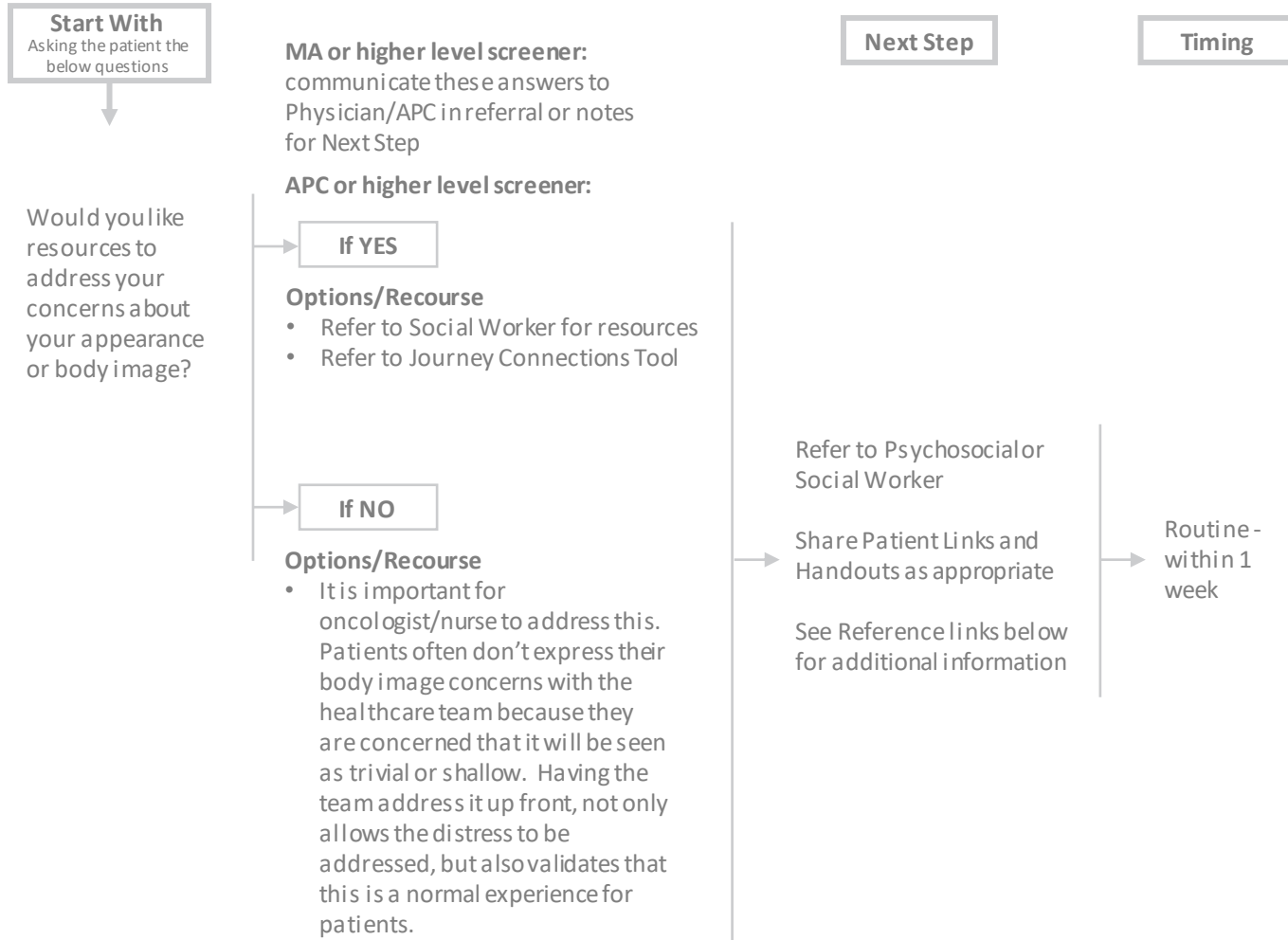


Clinician Follow Up Reference for Supportive Care

Physical Concerns – “YES” to Appearance



Notes

Stages I-III: Refer to a clinical social worker within healthcare system. If there are no social workers on staff, then refer to a cancer support center for treatment related to body image distress. Can refer to Look Good Feel Better by the American Cancer Society when appropriate.

Stage IV: Refer to a clinical social worker within healthcare system. If there are no social workers on staff, then refer to a cancer support center for treatment related to body image distress. Can refer to Look Good Feel Better by the American Cancer Society when appropriate.

Geriatric: This population CAN have issues with this and should not be dismissed. Disheveled look can be a sign of having cognitive issues.

Patient Links and Handouts:

- [American Cancer Society, Look Good Feel Better](#)
- [Cancer.Net, Self-Image and Cancer](#)
- [Cancer.Net, Coping with Changes to Your Body as a Young Adult](#)
- [NIH, NCI, Self-Image and Sexuality](#)

CSOC Patient Handout can be accessed at:
<http://cancer-help.me/appearance>

References:

- [Managing Body Image difficulties of adult cancer patients: Lessons from available research](#)
Fingeret, M. C., Teo, I. and Epner, D. E. (2014), Managing body image difficulties of adult cancer patients: Lessons from available research. Cancer, 120: 633–641.